

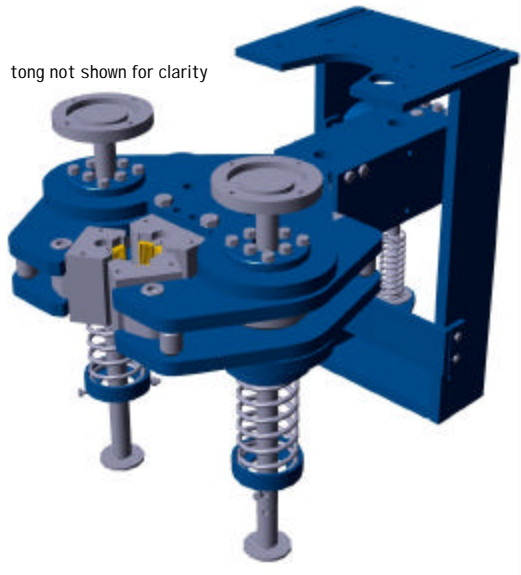
Introduction

Congratulations on the purchase of your new FARR B3 Jaw Backup assembly. This unit is designed to provide you with years of outstanding performance. Simple maintenance and care will extend its life and insure a continuing level of excellent performance and reliability.

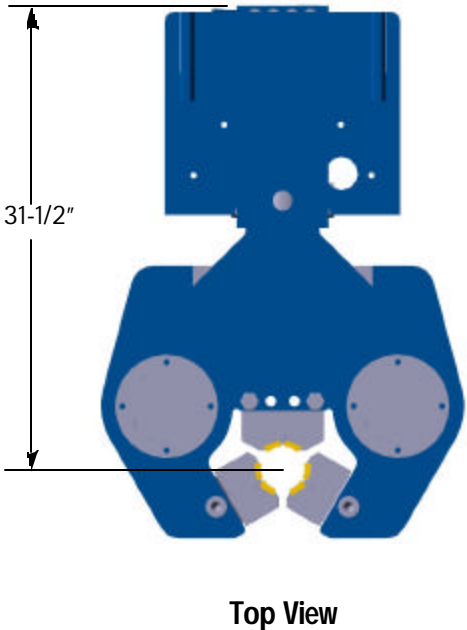
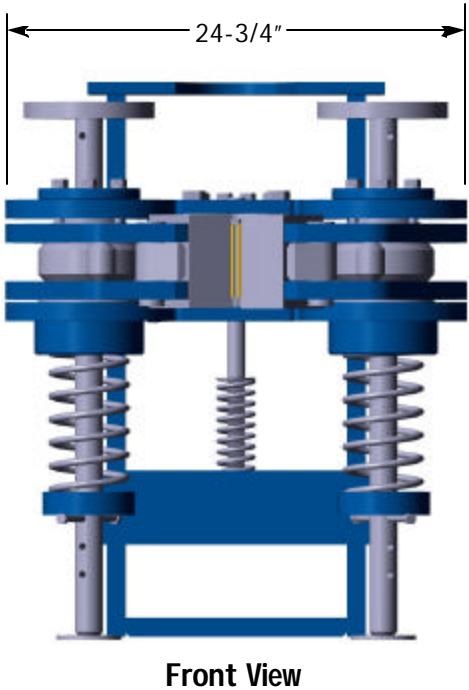
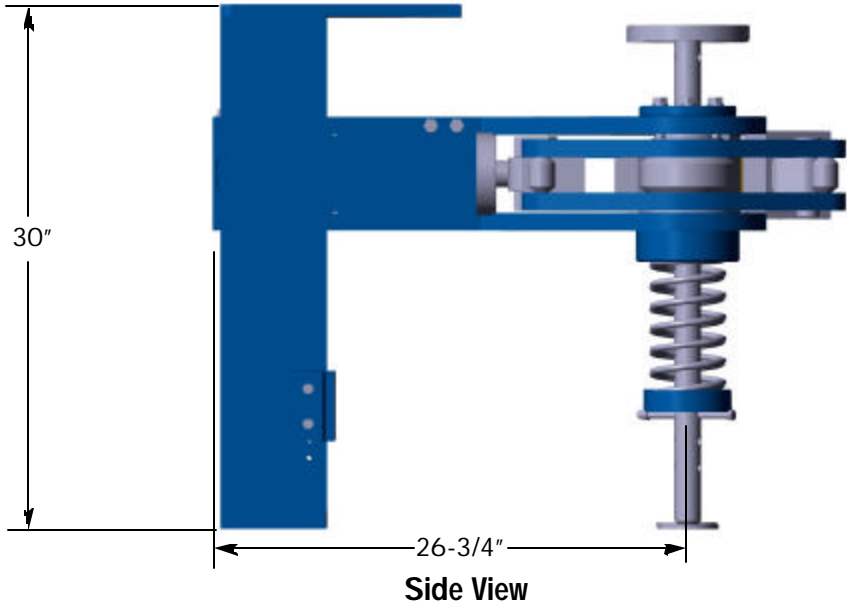
This manual will assist you in giving your tong the care it requires. Please read the manual and observe maintenance instructions. Replacement parts are readily available from FARR Canada Ltd. in Edmonton Alberta. However, most of the parts that are subject to wear or damage are standard items likely to be found in supply stores or parts depots. Many parts are transferable between FARR tongs.

Should you need replacement parts, or should you experience any difficulty not covered in this manual, please contact:

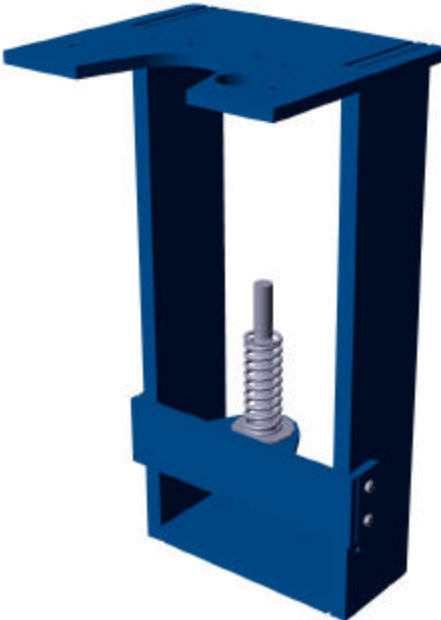
Farr Canada Ltd.
 14755-121A Avenue
 Edmonton, Alberta
 Canada T5L 2T2
 Phone: 780.453.3277
 Fax: 780.455.2432
 Email
 Sales: sales@farrcanada.com
 Engineering: eng@farrcanada.com
 Website
<http://www.farrcanada.com>



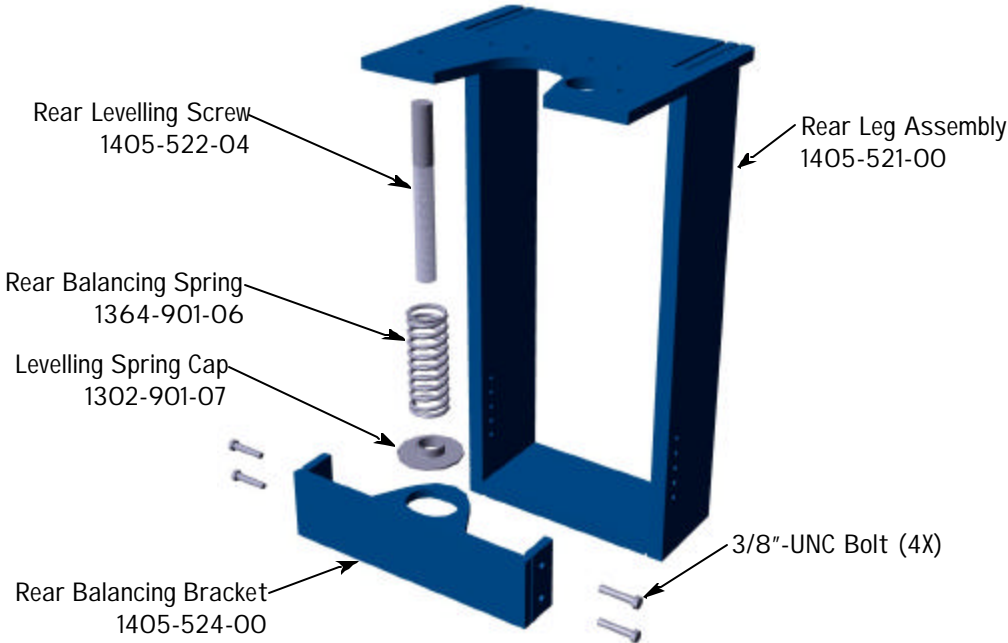
Views



Rear Leg Views

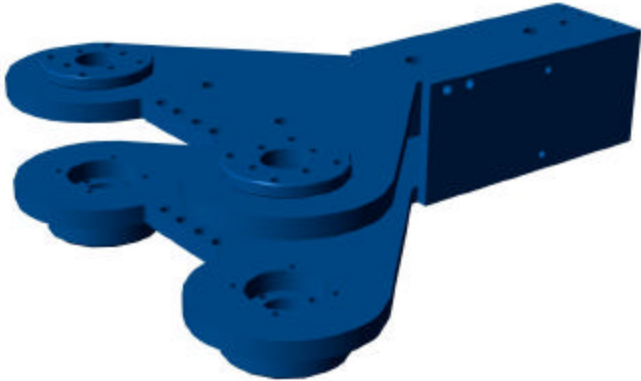


Rear Leg Assembled

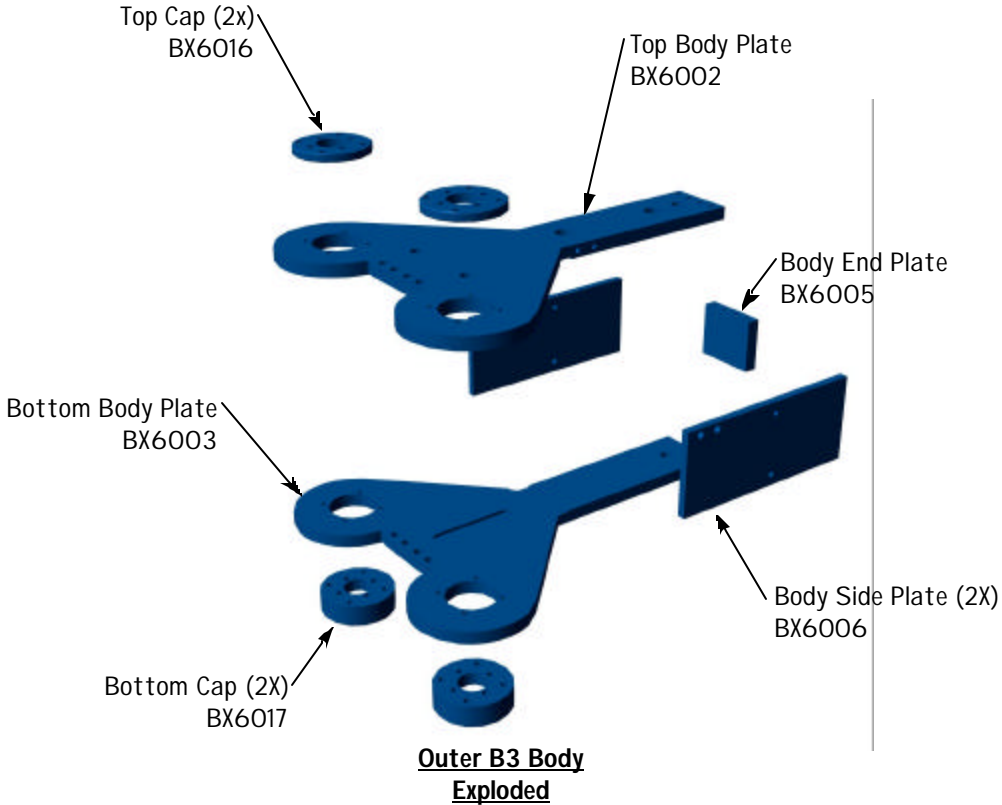


Rear Leg Exploded

*Outer B3
Body*

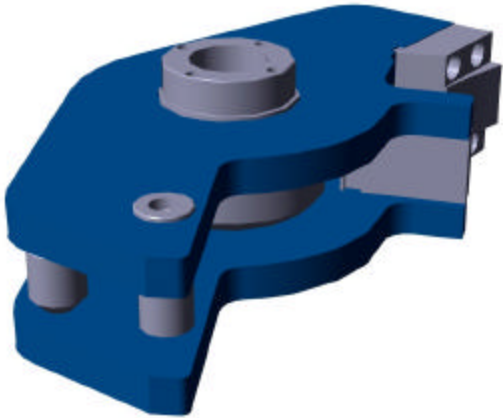


**Outer B3 Body
Assembled**

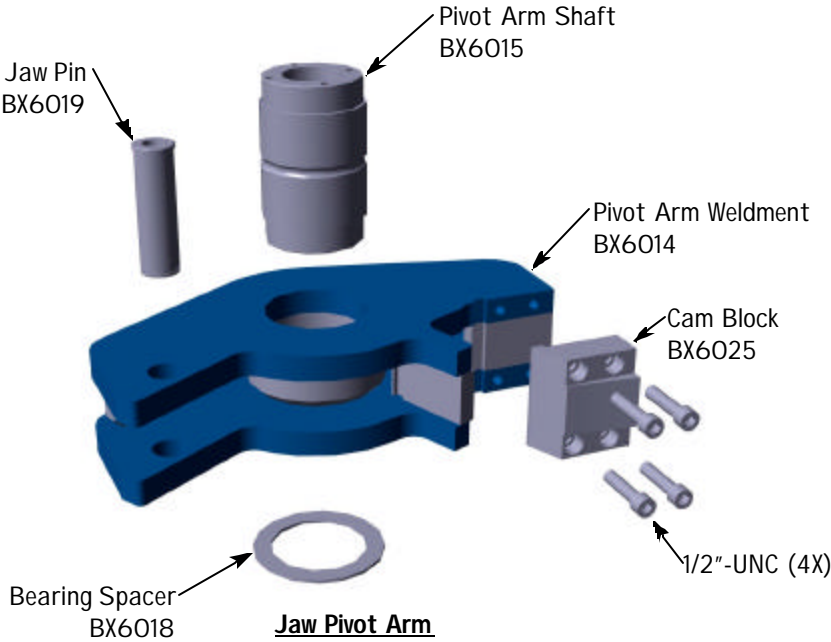


**Outer B3 Body
Exploded**

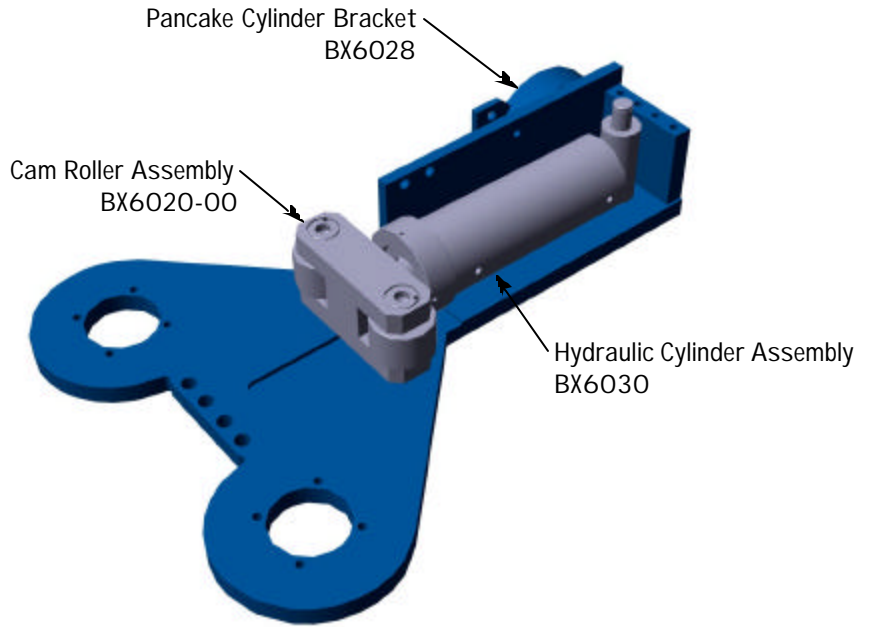
Jaw Pivot Arm



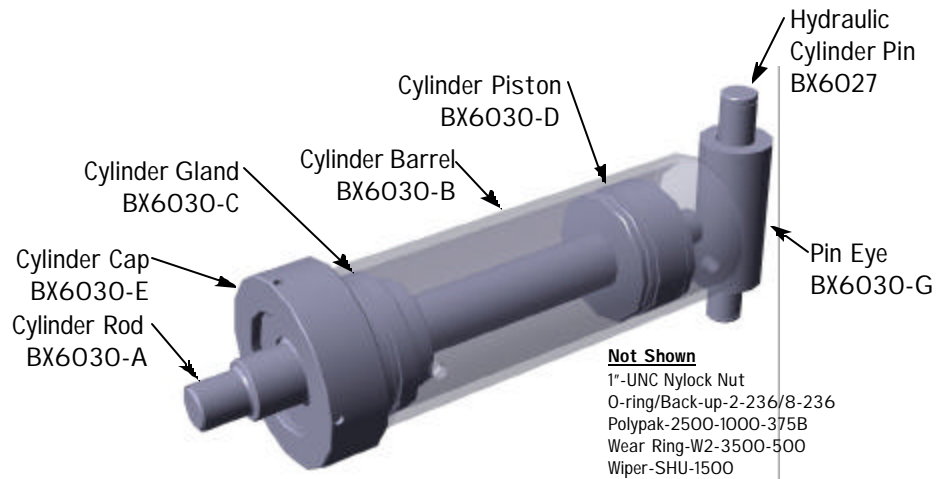
Jaw Pivot Arm
Assembled
(2X)



Hydraulic Parts

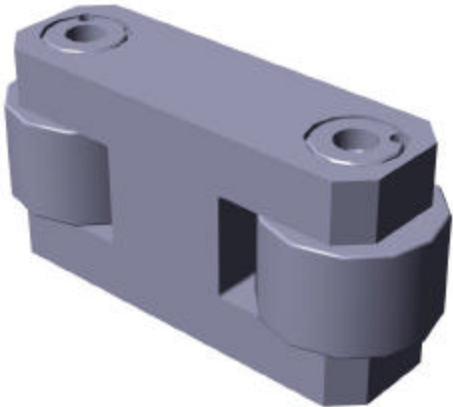


Partial View of Hydraulic Cylinder

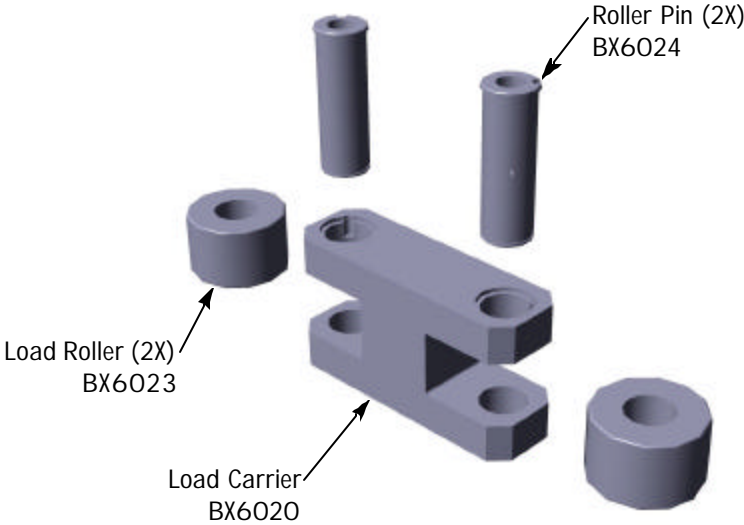


Hydraulic Cylinder

Cam Roller Assembly

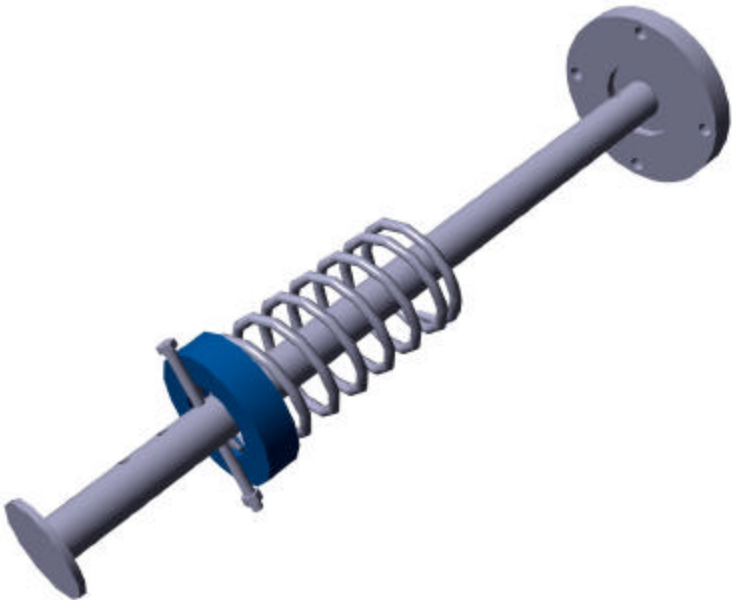


Cam Roller Assembly
Assembled
(1X)

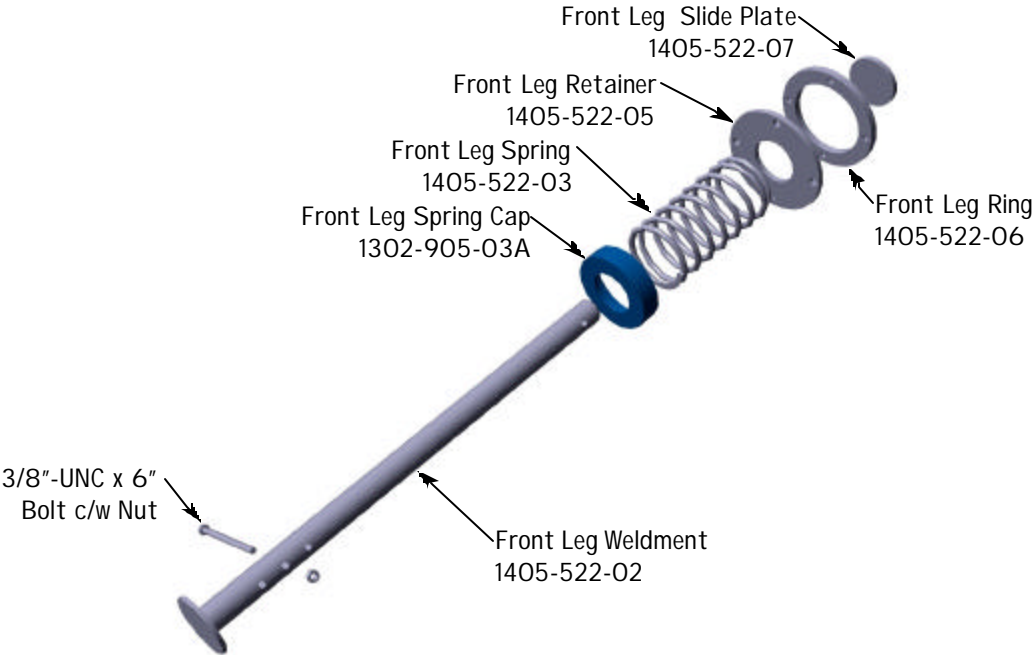


Cam Roller Assembly
Exploded

Front Leg

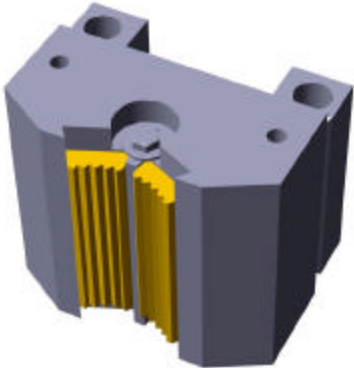


Front Leg Assembly
Assembled
(2X)

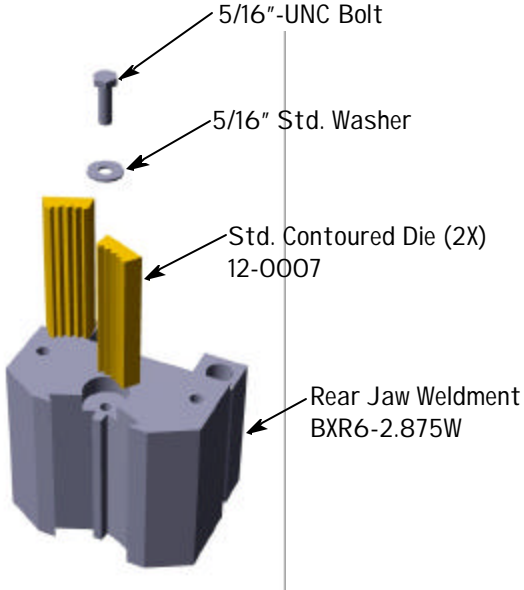


Front Leg Assembly
Exploded
(2X)

Rear Jaw

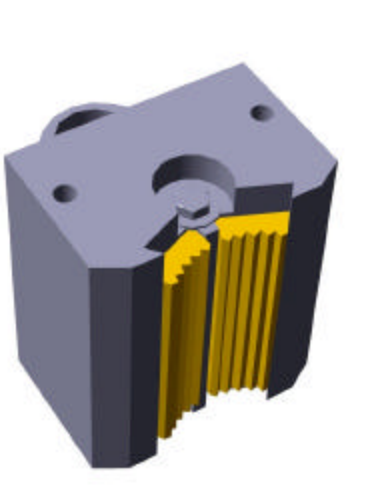


Rear Jaw
Assembled
(1X)

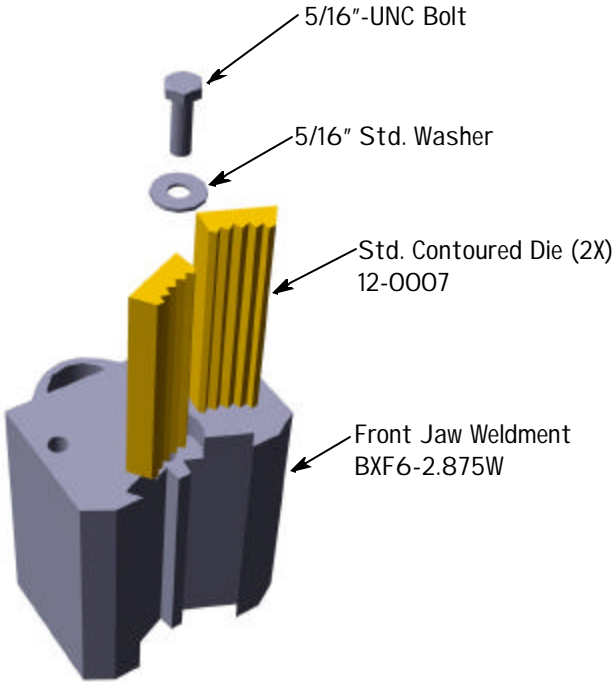


Rear Jaw
Exploded

Front Jaw



**Front Jaw
Assembled**
(2X)



**Front Jaw
Exploded**
(2X)